



# Thermal Imaging Camera

Industry temperature measurement

## TE Series

160×120 Uncool FPA detector

Low cost, small size

50Hz realtime measurement



# TE Series Portable Thermal Imaging Camera

TE series is a special low cost real-time IR camera in 160X120 resolution. It combines the traits of economical practical and portable. The camera symbolizes easy-to-use, standard and professional, developing for those applications that need instant infrared troubleshooting in power plant, petrochemicals, scientific research, fire fighting, and building inspection, metallurgy, etc. .



Color Warning



Beep  
Voice Alarm

40 seconds of digital voice per image stored with image



## Parameter

Item	TE	TE-S	TE-P	
Detector characteristics	Detector type			
	Uncooled FPA microbolometer			
Image characteristics	Array size/format			
	160x120			
	Field of view/min focus distance			
	12°x9°/0.3m			
	Spatial resolution (IFOV)			
	1.3mrad			
	Thermal sensitivity			
0.12°C@30°C				
Image display	Frame rate			
	50Hz		50/60Hz	
	Focus			
	Manual			
	Electronic zoom			
N/A				
Measurement	Spectral range			
	8-14μm			
	Image display			
	LCD			
	Built-in high-resolution color 2.5" LCD			
	Temperature ranges			
	-20°C~+250°C		-20°C~+250°C, optional up to +500°C	-20°C~+500°C, optional up to +1000°C
	Accuracy			
	± 2 °C or ± 2% of reading, Whichever is greater			
	Measurement correction			
Automatic/manual				
Image storage	Measurement mode			
	Movable spot, Movable area (maximum, minimum and average temperatures), Isotherm, Alarm (voice, color)		Up to 4 movable spots, Up to 3 movable areas (maximum, minimum and average temperatures), Line profile, Isotherm, Temperature difference, Alarm(voice, color)	
	Color palette			
	3		8	11
	Image adjustment			
	Auto/manual gain and brightness			
	Setup functions			
	Date/time, temperature unit, language			
	Emissivity correction			
	Variable from 0.01 to 1.0 or select from listings in pre-defined material list			
Laser pointer	Ambient temperature correction			
	Automatic corrections according to user input			
	Atmospheric transmission correction			
	N/A		Automatic correction according to user input object distance, relative humidity, ambient temperature	
Power supply	Storage card			
	Built-in flash memory, Up to 100 images		Built-in flash memory, Up to 2000 images	
	Storage mode			
	Manual single image saving		Automatic/manual single image saving	
Environment	File format-thermal			
	JPEG, 14 bit thermal image with measurement data			
	Voice annotation			
	N/A		Input via built-in microphone Up to 40 seconds of digital voice per image stored with image	
Physical characteristics	Laser pointer			
	Class 2, 1mw/635nm(red)			
	Battery type			
	Li-Ion, rechargeable			
	Battery operating time			
Interface	3 hours continuous operation			
	Charging system			
	Intelligent charger		Intelligent charger or power supply adaptor (optional) online charge	
	Power saving			
	YES			
Optional Lenses	External power			
	N/A		10-15V DC	
	Operating temperature			
	-15°C~+50°C			
Interface	Humidity			
	≤90% non-condensing			
	Encapsulation			
	IP54			
Interface	Weight			
	0.6Kg			
	Dimensions			
	250mmx100mmx72mm			
Interface	External DC input			
	N/A		Yes	
	Audio output			
	N/A		Yes	
Interface	Video output			
	N/A		PAL/NTSC	
	USB			
Image, measurement data transfer to PC		Image, measurement data and voice transfer to PC		

▲ The information contained in this document is subject to change without notice



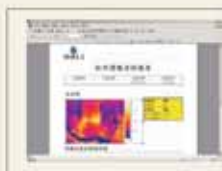
Low power consumption, 3 hours continuous operation



Audio Output  
USB Video Output  
Power connector

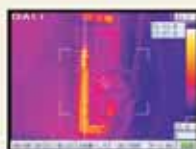


Laser Pointer

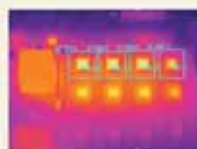


Free analysis software

Manual Lens



Line measurement



Area measurement



Optional Lenses